



***ROTOBEC***

---

**FORESTRY  
ATTACHMENTS**



---

## FROM DAWN TO DUSK.

Just like you, we know that the best things in life are tough earned. That's why we never take anything for granted.

Since 1975, we have been working hard to bring you the best. We revolutionized the forestry industry with our innovative and original rotating hydraulic system.

We are proud to design and manufacture almost every component of our products at our production facilities in Sainte-Justine, Quebec (Canada) and in Littleton, New Hampshire (USA). We use the most advanced technologies throughout the design and production process and believe that the result is the best-handling equipment available out there. It's about giving it our all and raising the bar.

Throughout the years, Rotobec has proven to deliver unbeatable quality and nothing less. We have worked hard to bring our products to you, wherever you are in the world. Today, Rotobec products are globally trusted and recognized. Making Rotobec a world leader in the industry.

**We are Rotobec.**

# THIS IS WHERE WE WERE BORN.

---



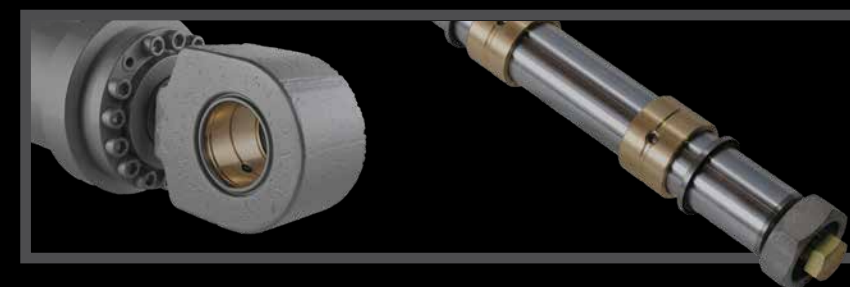
## WE ARE THE ORIGINAL.

All of our grapples are made with only the highest quality steel and components, to provide you with the best product out there. Combined with our exceptional workmanship, it ensures the longevity of your attachment.

We have put our heart and soul in every detail to bring you the best and highest performing forestry attachments since 1975.



## EVERY LITTLE DETAIL COUNTS.



Level up your productivity with increased versatility and less downtime.

# THE KING OF ROTATORS

WE'RE CALLED **ROTO-BEC** FOR A REASON.

Rotobec has been pushing the boundaries of innovation in the world of rotator design. We are well-known for our innovation and developments with the most advanced continuous 360° rotators. Our rotators are without a doubt the longest lasting ever made. They offer cost effective maintenance due to easily accessible greasing points and motor, allowing them to go further and protect your investment.

All of our rotators are fully sealed, allowing them to be fully submersed in up to 15 feet (5 meters) of water with the standard 360° rotator and a fully supported pinion gear. We are committed to delivering the most reliable rotators on the market, no matter where you are in the world.

Why settle for anything but the best?



# THE ONE AND ONLY CDS TECHNOLOGY

## LOGGING IS NO PLACE FOR THE WEAK. WHY SELF-CONTAINED HYDRAULICS?

The threat of damaged cylinders and hoses is a common and costly problem that can quickly bring your entire operation to a grinding halt. In order to protect your most precious asset, we have designed a cylinder that has revolutionized the logging industry.

Our CDS Technology cylinder offered on the HD & SHD lines, contains an internal hydraulic channel that eliminates the need for a return hose. This self-contained system provides you with a cylinder that is better protected and more durable than any other option on the market.

Want less downtime and less damaged cylinders? Try our CDS technology for yourself. You will not look back.



# SHORTWOOD GRAPPLES

**COMBINATION GRAPPLE:** The Rotobec Combination Grapple features a bypassing jaw design that allows operators to easily and efficiently handle single logs or full cords of pulpwood. The unique jaw shape allows for optimal log rolling making it incredibly easy to grab a full load every time.

**BUNCHING GRAPPLE:** Rotobec Bunching Grapples have been appreciated for 45 years by forestry contractors for their remarkable versatility. Our Bunching Grapples outdo themselves in loading and unloading both short and long wood in the forest. Their design ensures that the jaws do not extend beneath ground level when the grapple closes, leaving behind branches and dirt. The intersecting jaw design provides a firm grip on logs regardless of their size. This incredible grapple will provide you with an unmatched level of durability and productivity.

**RPA PULPWOOD GRAPPLE:** Equally capable as the Rake model of the RPA Grapple, the Pulpwood RPA features a specialized jaw shape that allows it to handle large bunches in loading and unloading applications. The diversity of the RPA is simply unmatched by any other type of grapple available. It is quite simply the world's greatest power attachment.

**MINI PC GRAPPLE — RAKE:** The Rotobec Mini PC Rake is a compact powerhouse, embodying the innovation of our full-size counterparts. Easily adaptable to various mini-excavators, it excels in multiple applications. Available in Rake configuration with 12-volt or 24-volt selector durability synonymous with Rotobec.

**PULPWOOD GRAPPLE:** Rotobec Pulpwood Grapples are specifically designed for handling short wood in piles at the road side or mill yard. Synchronized jaws and a perfectly designed jaw curvature allows for unbeatable efficiency when handling pulpwood. Optional butt plates and hold-down chain provide equipment operators with an unsurpassed level of control over their load.



COMBINATION  
GRAPPLE



BUNCHING  
GRAPPLE



RPA PULPWOOD  
GRAPPLE



MINI PC  
GRAPPLE



PULPWOOD  
GRAPPLE

**LOG GRAPPLE:** Available in Standard Duty, Heavy Duty and Super Heavy Duty models, there is a Rotobec Log Grapple suited to every application. Equipped with Rotobec's own high-pressure cylinders, robust interlocking head structure, and our RT-Series watertight rotators, it is no wonder that our Log Grapple has been outlasting the competition for decades.

**BUNCHING GRAPPLE:** Rotobec Bunching Grapples have been appreciated for 45 years by forestry contractors for their remarkable versatility. Our Bunching Grapples outdo themselves in loading and unloading both short and long wood in the forest. Their design ensures that the jaws do not extend beneath ground level when the grapple closes, leaving behind branches and dirt. The intersecting jaw design provides a firm grip on logs regardless of their size. This incredible grapple will provide you with an unmatched level of durability and productivity.

**BUTT'N TOP GRAPPLE:** Rotobec Butt'n Top Grapples are an excellent solution for the loading and unloading of tree length wood. These grapples feature four of Rotobec's own 5,000 psi (345 bars) high-pressure cylinders, which provide an unbeatable level of control and stability over your load. We offer both a bunching as well as a sorting configuration, so there is a perfect option for you regardless of the type of wood you are handling.

**COMBINATION GRAPPLE:** The Rotobec Combination Grapple features a bypassing jaw design that allows operators to easily and efficiently handle single logs or full cords of pulpwood. The unique jaw shape allows for optimal log rolling making it incredibly easy to grab a full load every time.

**RPA — RAKE:** The Rotobec Power Attachments (RPA) are up for anything. Each configuration is available with either a dangle rotation or one of Rotobec's incredible RGP positioned rotations. Our Rake configuration is used primarily by the forestry industry. The curvature of the jaw makes this an ideal tool for handling logs in hoe chucking and chipper feeding applications. The diversity of the RPA is simply unmatched by any other type of grapple attachment available. It is quite simply the world's greatest power attachment.

# LONGWOOD GRAPPLES



LOG  
GRAPPLE



BUNCHING  
GRAPPLE



BUTT'N TOP  
GRAPPLE



COMBINATION  
GRAPPLE



RPA — RAKE

# ROTOBEC GRAPPLE SAWS

Step up your productivity by multitasking. Remove the human element and increase your operation's efficiency immediately with this log chopping beast.

Rotobec has partnered with Hultdins to offer our customers in the logging industry with an unbeatable one-two punch: the Grapple Saws. The addition of a saw adds an element of versatility to the already unstoppable Rotobec Log Grapple and Rotobec Power Attachment (RPA) Grapple. These amazing saws are available with a .404 and a .750 pitch and can be fitted to both the Heavy Duty and Super Heavy Duty series grapples of log grapples as well as the Rake and Bucket series of RPA's. Working with it is a breeze with its automatic chain tension and automatic saw bar return. To top it off, it has a built-in proportional lubrication system and a bar feed cylinder. Surpass your competition with this 2-in-1 attachment while increasing your on-site human security. It really does it all.

**ELEVATE  
YOUR  
GAME.**

**NEW!**



## LIMB REAPER

Introducing the dynamic duo of innovation from Rotobec: the Limb Reaper created by combining our Mini PC and Hultdins saw! Our mini power attachments, compact powerhouses with all the groundbreaking features of their full-size counterparts, seamlessly adapt to various mini excavators ranging from 8 to 10 tons, unleashing their might across diverse applications. Rest assured that these mini-grapples inherit the unyielding toughness and durability synonymous with Rotobec.

A large hydraulic grapple is shown holding a large stack of logs. The grapple is dark grey and has a curved jaw shape. The logs are light brown and are stacked in a neat pile. The background is a bright, overcast sky.

EASY **ROLLING**  
ADVANCED **JAW SHAPE**  
NEVER DROP **A LOG**



All Rotobec grapples are recognized for their unique shape that allows wood to easily roll up the inner surface of the jaw. Our engineering team has invested an incredible amount of time into perfecting the jaw curvature of every grapple. Our jaw design allows for optimal rolling. This feature allows material handler operators to achieve a round bunch every time, no matter how crooked the wood may be. Increase your efficiency and outlift the competition every time.

**THE  
PERFECT  
SHAPE.**


## LOG GRAPPLES

MODEL	Weight (including rotator)	Area Tip to Tip		Maximum Opening		Maximum Closing			
		lb	kg	ft <sup>2</sup>	m <sup>2</sup>	in.	mm	in.	mm
<b>Standard Duty</b>									
5052-RT502	1,350	612	3.70	0.34	52 1/2	1336	4 3/4	121	
<b>Heavy Duty</b>									
4042HD-RT504	1,385	628	2.72	0.25	42	1066	4	105	
4048HD-RT504	1,510	685	3.06	0.28	48	1219	4	101	
4552HD-RT504	1,730	785	3.64	0.34	52 3/4	1339	4 1/2	116	
6058HD-RT504	1,930	875	5.08	0.47	58 1/4	1482	6 1/4	158	
6065HD-RT1004	2,715	1,232	6.16	0.57	66 1/2	1687	6 1/4	160	
<b>Super Heavy Duty</b>									
4552SHD-RT1004	2,765	1,254	4.17	0.39	53	1345	4 1/4	110	
4560SHD-RT1004	2,875	1,304	5.13	0.48	60 1/4	1530	4 1/2	117	
6065SHD-RT1004	2,965	1,345	6.16	0.57	65 3/4	1668	6 1/4	160	

## COMBINATION GRAPPLES

MODEL	Weight (including rotator)	Area Tip to Tip		Maximum Opening		Maximum Closing			
		lb	kg	ft <sup>2</sup>	m <sup>2</sup>	in.	mm	in.	mm
<b>C Series</b>									
060C-RT252	1,355	615	6.50	0.60	68 1/4	1736	6 1/4	162	
070C-RT322	1,495	678	7.50	0.70	74 1/4	1886	6 1/2	164	
080C-RT502	2,045	928	8.61	0.80	81 1/4	2061	6 1/2	168	
100C-RT502	2,560	1,161	10.76	1.00	89 1/2	2274	7 3/4	198	
125C-RT502	2,760	1,252	13.45	1.25	101	2564	9 1/2	241	
150C-RT1002	4,020	1,823	16.15	1.50	110	2792	10 1/4	261	
175C-RT1002	4,075	1,848	18.84	1.75	118 1/2	3009	11 1/4	286	
200C-RT1002	5,160	2,341	21.53	2.00	127	3227	11 1/2	295	
250C-RT1002	5,426	2,461	26.90	2.50	132	3353	13	330	
<b>CHD Series</b>									
050CHD-RT502	1,535	696	5.40	0.50	65	1649	6 1/4	158	
060CHD-RT502	1,940	880	6.45	0.60	69 1/4	1758	6 1/4	159	
070CHD-RT502	2,085	946	7.50	0.70	76 1/4	1936	6 1/4	160	
080CHD-RT502	2,555	1,159	8.61	0.80	81	2058	7 1/2	191	
100CHD-RT1002	3,690	1,674	10.76	1.00	90 1/2	2296	9	227	
125CHD-RT1002	3,935	1,785	13.45	1.25	100 3/4	2557	9 1/2	238	
150CHD-RT1002	5,105	2,316	16.14	1.50	110 1/4	2801	9 3/4	247	
175CHD-RT1002	5,325	2,415	18.84	1.75	118 3/4	3018	11	282	
200CHD-RT1002	6,470	2,935	21.53	2.00	127 1/2	3241	11	280	
225CHD-RT1002	6,625	3,005	24.22	2.25	134 3/4	3424	12 1/4	312	
250CHD-RT1002	6,865	3,114	26.91	2.50	140 1/2	3567	13	333	



## PULPWOOD GRAPPLES

MODEL	Weight (including rotator)	Capacity		Area Tip to Tip		Maximum Opening		
		lb	kg	ft <sup>2</sup>	m <sup>2</sup>	in.	mm	
<b>PULPWOOD</b>								
040-RT142	795	361	0.27	0.98	4.31	0.40	55 1/2	1408
045P-RT142	1000	454	0.30	1.10	4.84	0.45	70 1/2	1793
060-RT222	1,050	476	0.40	1.46	6.46	0.60	75 1/4	1910
090-RT252	1,275	578	0.61	2.20	9.69	0.90	88	2233
090HD-RT322HT	2,180	989	0.61	2.20	9.69	0.90	86 1/2	2196
100-RT322HT	1835	832	0.67	2.44	10.76	1.00	98	2488
115PSG-RT504HT	3,335	1,513	0.77	2.79	12.38	1.15	99	2512
145PSG-RT504HT	3,525	1,599	0.98	3.55	15.61	1.45	110 3/4	2815
145PHDSG-RT1004HT	4,715	2,139	0.98	3.55	15.61	1.45	113 3/4	2890
185PSG-RT1004HT	4,875	2,211	1.24	4.49	19.91	1.85	124 1/2	3164
225PSG-RT1004HT	5,135	2,329	1.51	5.49	24.22	2.25	135 3/4	3448
265PSG-RT1004HT	6,280	2,849	1.78	6.46	28.52	2.65	147 1/4	3743

## RPA – RAKE

MODEL	Weight (including rotator)	Area Tip to Tip		Maximum Opening		Maximum Closing			
		lb	kg	ft <sup>2</sup>	m <sup>2</sup>	in.	mm	in.	mm
<b>RPA – RAKE</b>									
RPA2030R43-RGP900A	1,935	878	3.60	0.33	67 1/4	1707	4 3/4	118	
RPA2030R43-RCH-RGP600	1,805	819	3.60	0.33	67 1/4	1707	4 3/4	118	
RPA2030R43-RLP602	1,820	826	3.60	0.33	67 1/4	1707	4 3/4	118	
RPA3045R32-RGP900	2,640	1,197	4.00	0.37	70	1780	4 1/2	113	
RPA3045R43-RGP900	2,760	1,252	4.00	0.37	70	1780	4 1/2	113	
RPA4570R32-RGP1300	3,940	1,787	6.00	0.56	85	2161	5 1/4	135	
RPA4570R43-RGP1300	4,145	1,880	6.00	0.56	85	2161	5 1/4	135	
RPA60100R43-RGP1704	6,010	2,726	8.00	0.74	95 3/4	2431	6 1/2	163	
<b>RPA – PULPWOOD</b>									
RPA3045P06-RGP900	3,030	1,374	6.00	0.56	75 3/4	1927	5 1/4	133	
RPA3045P08-RGP900	3,125	1,417	8.00	0.74	87	2210	8	201	
RPA4570P08-RGP1300	4,850	2,200	8.00	0.74	90 1/2	2299	8 1/4	210	
RPA4570P10-RGP1300	5,020	2,277	10.00	0.93	99 1/2	2529	9 1/4	238	
RPA4570P12-RGP1300	5,225	2,370	12.00	1.11	110 1/4	2800	10	254	

## BUTT'N TOP GRAPPLES

MODEL	Weight (including rotator)	Area Tip to Tip		Maximum Opening		Maximum Closing			
		lb	kg	ft <sup>2</sup>	m <sup>2</sup>	in.	mm	in.	mm
<b>SORTING</b>									
B325S-RGP1306	4,270	1,937	3.50	0.33	11	282	61 1/4	1554	
<b>BUNCHING</b>									
B465B-RGP1306	4,285	1,944	5.00	0.46	15	384	57 3/4	1469	
B550B-RGP1306	4,375	1,984	5.92	0.55	18 3/4	477	64	1627	
B560B-RGP1706	6,185	2,805	6.03	0.56	18	456	71	1801	
B650B-RGP1706	6,185	2,805	7.00	0.65	19 1/4	489	73	1857	

# FORESTRY ATTACHMENTS

# TECHNICAL DATA

# AVAILABLE ACCESSORIES/OPTIONS

## BUNCHING GRAPPLES

MODEL	Weight (including rotator)		Area Tip to Tip		Maximum Opening		Maximum Closing	
	lb	kg	ft <sup>2</sup>	m <sup>2</sup>	in.	mm	in.	mm
<b>Heavy Duty</b>								
F360HD-RT142	1,100	499	3.88	0.36	74	1881	4 7/8	124
F420HD-RT252	1,225	556	4.52	0.42	79	2004	5 3/4	145
F520HD-RT252	1,455	660	5.59	0.52	86 3/4	2207	6 3/4	172
F640HD-RT502	2,210	1,002	6.88	0.64	95 3/4	2432	7	178
F645HD-RT322HT	2,115	959	6.88	0.64	96 3/4	2459	6 3/4	172
F800HD-RT502STDHT	2,745	1,245	8.61	0.80	113 1/2	2885	8	201
F1000HD-RT502STDHT	2,820	1,279	10.76	1.00	118 1/4	3003	9 1/4	234
F1250HD-RT1002STDHT	3,565	1,617	13.45	1.25	126	3202	10 3/4	273
F1500HD-RT1002STDHT	3,990	1,810	16.15	1.50	138	3505	12	303
F1750HD-RT1002	5,270	2,390	18.84	1.75	150 3/4	3831	12	303
<b>Super Heavy Duty</b>								
F360SHD-RT322	1,300	590	3.88	0.36	73 1/2	1866	4 3/4	123
F420SHD-RT322	1,360	617	4.52	0.42	77 1/2	1966	5	127
F520SHD-RT322	1,750	794	5.59	0.52	86 3/4	2207	6 3/4	171
F1250SHD-RT1002	4,225	1,916	13.45	1.25	125 3/4	3192	9 3/4	250

## MINI PC POWER ATTACHMENTS — RAKE

MODEL	Weight (including rotator)		Capacity	
	lb	kg	cord of 8 ft	m <sup>3</sup>
<b>RAKE</b>				
PC018R-RGP-252	870	395	0.12	0.45
PC025R-RGP252	1,035	469	0.17	0.62

## GRAPPLE SAWS

MODEL	Motor Displacement	Weight		Standard Bar Length		Optional Bar Length		Chain	Recommended Pressure		Recommended Flow	
		lb	kg	in.	mm	in.	mm		psi	bars	gpm	lpm
<b>RGS</b>	cc							pitch				
RGS350	10	196	89	29 1/2	750	N/A	N/A	0.404-18H	3500	241	25	95
RGS404	19	350	159	39	1000	35 1/2	900	0.404-18H	3500	241	42	159
RGS750	40	585	265	40	1016	45	1150	0.750-11H	3150	217	55	208



MALE YOKE



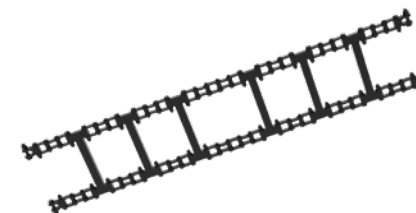
FEMALE YOKE



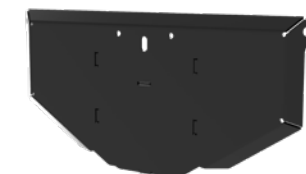
PIN-ON LUGGING



QUICK ATTACH LUGGING



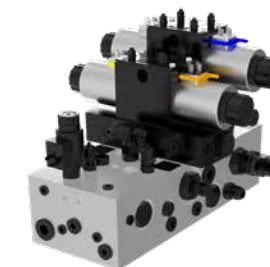
CHAIN OPTION



LEVELING PLATE OPTION



SYNCHRO GEARS OPTION



VALVE ON SWIVEL (VOS)



Specifications and models may vary without notice. For the most accurate and up-to-date information, please visit our website or contact your regional sales representative.

# ROTOBEC

■ At Rotobec, we believe true strength isn't about claiming victory - it's about showing up, every day, for those who count on us.

Like you, we've earned our place through hard work and commitment. And like you, we never take it for granted. Every bolt we tighten, every call we answer, every piece of equipment we build - it's all done with purpose, precision, and pride.

We believe reliability is the truest form of respect. It's what turns machines into trusted partners, and challenges into shared achievements.

Because when you lift others up, everyone rises.

That's what drives us to keep improving, keep listening, and keep building - not just stronger equipment, but stronger relationships.

Together, we aim higher. If it doesn't exist, we'll create it. If the horizon looks tough, we'll face it - side by side.

We are Rotobec.

**The power that lifts you up.**



# ***ROTOBEC***



## **CONTACT US**

### **Eastern Canada & International**

200 rue Industrielle  
Sainte-Justine, QC CANADA  
G0R 1Y0  
T. (418) 383-3002

### **Eastern & Central USA**

162 Rotobec Drive  
Littleton, NH USA  
03561  
T. (603) 444-2103

### **Southern USA**

10903 Shady Trail, Suite 115  
Dallas, TX USA  
75220  
T. 855-383-3002, ext. 8091

### **Western Canada & USA**

10-2660 Kyle Rd  
West Kelowna, BC CANADA  
V1Z 2N1  
T. 855-383-3002, ext. 8090

### **Brazil**

Rua Carlos Essensfelder, 952  
Bairro Boqueirão, Curitiba Paraná  
CEP 81650-090  
T. (41) 98852-5999